

Last Modified: July 6, 2019

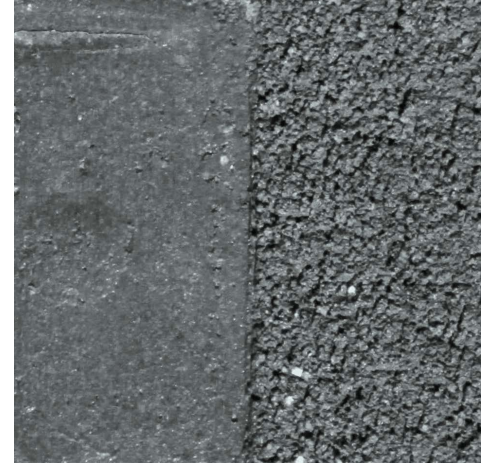
## Lithomex Color Chart



**LM 100**  
(Yellow Terracotta)



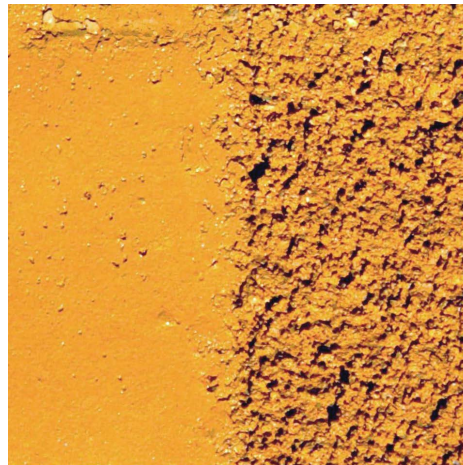
**LM 250**  
(Taupe Sandstone)



**LM Black**  
(Black Modifier)



**LM Red**  
(Red Modifier)



**LM Yellow52**  
(Yellow Modifier)



**LMBR 7**  
(Dark Brownstone)

### **Disclaimer:**

For best results, set your device to maximum brightness. Only rely on hard samples. Many factors affect how images appear on your screen and how they print on your specific printer. It is suggested that you send us a sample or purchase the stock [Lithomex kit](#) so that you may view each tile individually or hold the tiles up to a building to determine a match. If you [send us a sample](#) we will call you, free of charge, to make a suggestion if one of our stock [Lithomex](#) colors is similar to the sample you send.

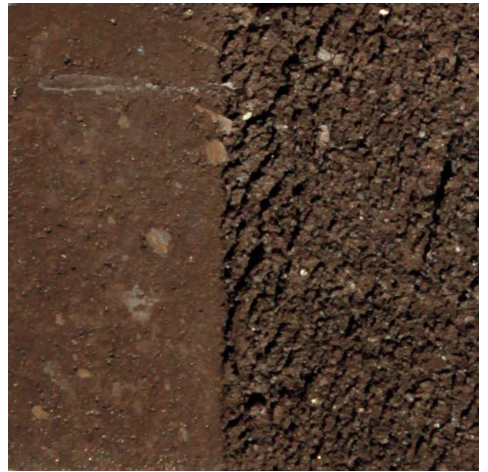




**LMBR 8**  
(Light Brownstone w/ Mica)



**LMBR 9**  
(Pale Brownstone)



**LMBR 11**  
(Chocolate Brownstone w/ Mica)



**LMBR0013**  
(Buff Brick)



**LMGN 2**  
(Serpentine)



**LMMARB 1**  
(Marble)



**LMRD 12.5**  
(Deep Salmon Brick)



**LMRD 13.25**  
(Brick Red Brownstone)

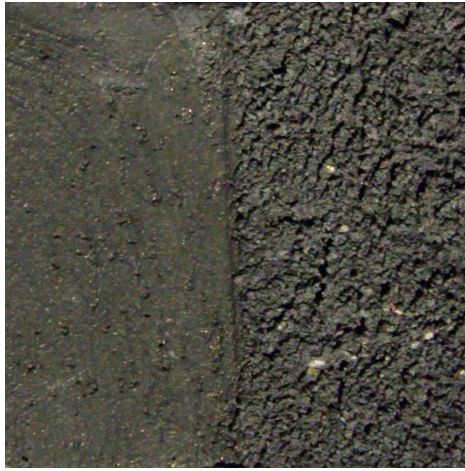


**LMRD 13.5**  
(Dark Brick)





**LMRD 5**  
(Salmon Brick)



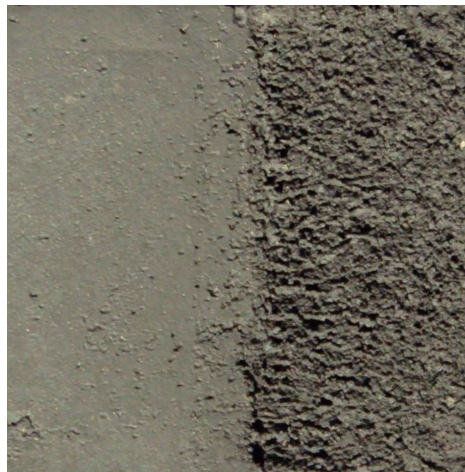
**LMST0021**  
(Slate)



**LMST0060**  
(Dark Reddish Brownstone)



**LMST0062**  
(Raw Umber Sandstone)



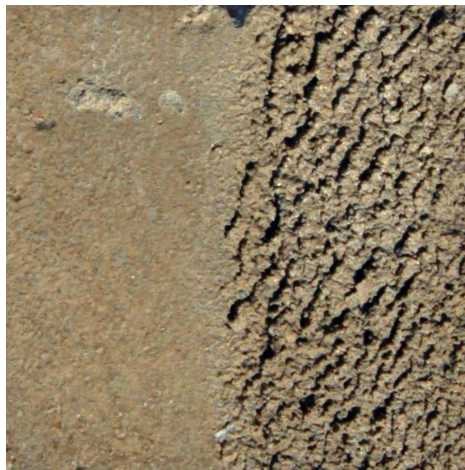
**LMST0064**  
(Blue Stone)



**LMTC1002**  
(Orange Terracotta)



**LMTN 3**  
(Light Indy Limestone)



**LMTN 4**  
(Dark Limestone)



**NAT**  
(Natural)